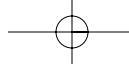


# *Quality Early Care and Education Builds a Better Future for Westchester*





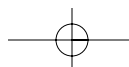
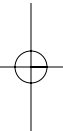
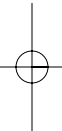
## *The Child Care Council of Westchester, Inc.*

### *Quality Early Care and Education - - Where Our Future Begins*

The Child Care Council of Westchester, Inc. champions healthy development of children, families, and communities by promoting quality early child care and education. We accomplish this mission by:

- Linking families and businesses to child care
- Implementing quality improvement strategies for child care
- Advocating for policies and resources that strengthen child care

Our work benefits the economic health and quality of life of our communities.



June 2012


Dear Friend of the Child Care Council of Westchester:

In 2011, the Child Care Council of Westchester fought hard to maintain affordable, quality child care for Westchester County families. We reached out to parents, child care professionals, and community members to advocate for child care funding and support for other programs critically needed in our county. Our efforts were successful as monies were returned in the 2012 budget.

The importance of child care was also re-affirmed in 2011 by the Mid-Hudson Regional Council. The Council, charged by Governor Andrew Cuomo to develop a five-year strategic plan for the economic development of seven counties including Westchester, cited quality child care as one of the key building blocks for the workforce we need for continued economic growth. We were heartened to see the Council joining such national organizations as the U.S. Chamber of Commerce in its recognition of the short- and long-term impact child care has on the economy.

We continued to work with parents and providers toward the shared goal of affordable, quality care for all Westchester County children. For parents, we are a trusted source for child care referrals. In addition, we continue to provide assistance to parents in applying for child care subsidies and enrolling families in Child and Family Health Plus programs. For providers, we provided educational workshops, training, capacity-building and technical assistance, and professional development opportunities, all with the goal of developing a skilled and engaged early care and education workforce.

Our many accomplishments in 2011 were made possible through the support of our early care and education colleagues, government partners, funders and the many individuals, businesses and organizations that share our vision of healthy children, families, and communities. We extend our thanks to all of them for their commitment to the children of Westchester County.



Kathleen Halas  
Executive Director



# The Child Care Council of Westchester Provides a Better Future for Westchester ... by supporting parents with child care assistance.

In this uncertain economic environment, affordable, high quality child care was even more important to parents. Throughout 2011, the Child Care Council continued to work hard to meet this fundamental need. Our greatest accomplishment was the restoration of \$4.3 million in child care subsidy funding in the 2012 budget. Partnering with the Westchester Children’s Association and the Westchester Early Childhood Directors’ Association, and with the participation of thousands of community members, the Council conducted voter registration and education activities and encouraged parents and other stakeholders to speak up for children. The Council’s main priority continues to be to help parents find affordable, quality care for their children.

## 2011 Highlights

- We responded to 3,498 requests for child care and 4,831 children were referred to child care through the Council, down slightly from 2010.
- The Council’s searchable online database, e-Child Care, continued to be an invaluable tool for parents searching for child care centers and school-age programs throughout Westchester County; nearly 1,200 families utilized the Council’s child care search tool.
- Over 1,048 families received assistance in applying for and obtaining child care subsidies from the Council’s Subsidy Support Services. Outreach to community organizations to promote utilization of this service was expanded.
- Nearly 860 individuals enjoyed new health care coverage, as 618 children and 243 adults were enrolled in the Child and Family Health Plus programs by the Council’s facilitated enrollment specialist.



Throughout 2011, the Council continued its efforts to restore child care financial assistance and other programs for families funded by Westchester County. Council Executive Director Kathy Halas made the case for early childhood funding through public testimony, discussions with Westchester County government officials, and policy updates to parents, child care programs and area media. Thousands of parents demonstrated their support for child care by attending budget hearings, writing letters, and participating in the on-line Vote For Kids campaign, launched by the Westchester Children’s Association, a partner with the Council in advocacy for children.



## What 2011 Callers to the Council’s Resource and Referral Department Asked for:

### ■ Type of child care:

- 81% Child Care Centers
- 50% Family Child Care and Group Family Child Care Providers
- 28% In-Home (nanny) Care
- 24% Pre-K or Nursery School Programs
- 15% School-Age Programs

### ■ Type of schedule/care:

- 82% full-year care
- 88% full time care
- 16% after school care
- 15% part-week care
- 18% indicated that their child had some special needs
- 16% morning care
- 6% before school care
- 12% afternoon care
- 7% requested other languages (majority were for Spanish speaking providers)

### ■ Location of care:

- 87% of all callers were seeking care near their home; the top four locations were:
  - 23% Yonkers
  - 14% White Plains
  - 11% Mount Vernon
  - 10% New Rochelle

### ■ Type of household:

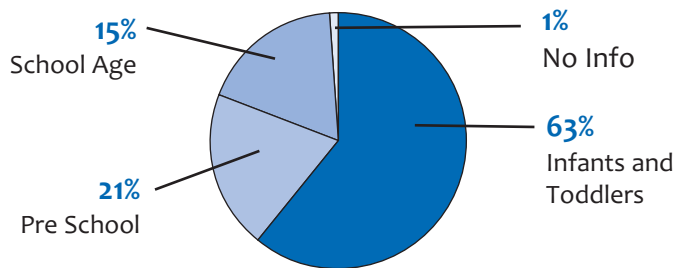
- 57% two-parent households
- 40% single-parent households
- 2% guardians, grandparents or other relatives
- 1% teen parents

### ■ Eligibility for public child care financial assistance:

- 53% were not eligible for child care financial assistance
- 42% were eligible for child care subsidies

## 2011

### Age Breakdown of the 5,245 Children Referred to Care by the Resource and Referral Department



### THE COUNCIL’S SUBSIDY SUPPORT SERVICES

Council staff assisted **1,047** families with the child care subsidy process as well as **325** providers.

#### BREAKDOWN OF UTILIZATION BY MODALITY:

- **34%** (109) Legally Exempt Providers
- **30%** (97) Group Family Child Care Providers
- **15%** (49) Family Child Care Providers
- **14%** (45) Child Care Centers
- **7%** (25) School Age Programs

The Council assisted and/or trained **162** child care businesses with the new computer based time and attendance system for subsidized children.



# The Child Care Council of Westchester Builds a Better Future for Westchester . . . by cultivating a skilled early care and education workforce.

Quality child care services to children require patience, creativity, an ability to nurture, motivate, teach and support children. At the administrative level, leadership, organizational and administrative skills are crucial. In order to prepare child care workers to meet the demands of the profession, the Council offered workshops, both at our offices and at various programs around the County, all day conferences, specialized educational series on current topics such as autism, and technical assistance. On the Council's website, providers can now find a new section on child health information, covering current information on topics such as new crib standards and seasonal flu information. The Council also understands the importance of affirming the hard work that providers do each day; our Annual Awards Breakfast recognized the exceptional providers that have made outstanding efforts to provide high quality care.

## 2011 Highlights

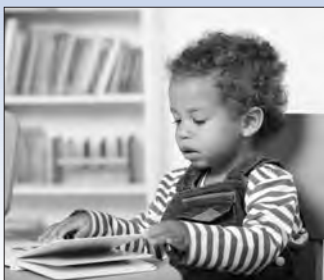
- The Council delivered 217 calendar workshops and 57 on-site workshops attended by a total of 2,312 early care and education professionals.
- The eCDA had an enrollment of 9 students. Four students from Rockland County and 9 students from Buffalo also enrolled in the course.
- Nine infant toddler caregivers completed our intensive Creative Curriculum Course funded by the Westchester County Office for Women.
- The Professional Development Department presented a new workshop series on Autism Spectrum Disorder, which included 3 workshops in the series. Two were presented by Patricia Towle, PhD., Child Psychologist and Director of Psychology Training at the Westchester Institute for Human Development entitled, Autism Spectrum Disorder: Learning About Young Children Who May be On the Spectrum 'and Understanding Autism Spectrum in Young Children. The third workshop was presented by Priscilla Gilman, PhD. Dr. Gilman is the author of *The Anti-Romantic Child: A Story of Unexpected Joy*. The entire series was attended by a total of 103 child care professionals, educators, and parents.
- The Institute for School Age Child Care (ISACC) continued its support of the School Age Director's Network, a resource for program directors and staff, and engaged school age directors in training and technical assistance that strengthened the quality of their programs. Training Kits continued to ensure school age directors have tools to easily and conveniently train their staff. In 2011, two new kits were offered: Making School Age Program Planning Intentional and Meaningful and Homework Assistance in Your School Age Program. New Technical Assistance Papers were created to help directors address common regulatory violations.



Patricia Towle, Ph.D



Priscilla Gilman, Ph.D



### INFANT TODDLER CONFERENCES

■ Two infant toddler conferences were held in 2011. The first was a Brain Development Conference held at The Crowne Plaza in White Plains on March 17. Jennifer Rosinia, Ph.D. presented on sensory processing and development. The second Infant Toddler Conference was held at The Westchester County Center on October 26. Claire Rubman, Ph. D. presented on Language and Literacy. Two hundred early childhood professionals attended these conferences.

- With support from IBM, through a grant from Work Family Directions, ISACC engaged two middle school programs in a quality improvement process to improve programmatic and business capacity. ISACC also presented a conference on marketing and branding middle school programs, which was attended by an audience of over 100.
- The Health Care Consultant Services Department conducted Medication Administration Training courses for 74 participants and provided health care consultant services to 73 child care programs.
- The Professional Development Department delivered 74 technical assistance visits with family and group family providers serving children receiving child care subsidy, funded by the Westchester County Department of Social Services.
- The Council worked closely with 14 school age programs to provide intensive technical assistance and training to reduce the number of regulatory violations.
- The 3rd Annual Council Book Drive led by Miriam Kerness, Infant Toddler Regional Coordinator, was hugely successful again. We were able to distribute over 3,500 books to 58 programs throughout the county. We also partnered with the Westchester Association for the Education of Young Children on this initiative.

## Training Grants

Through the generosity of several funders, the Council presented several training opportunities:

- With a legislative grant made possible by N.Y. State Senator Suzi Oppenheimer, the Council presented a 3 part workshop series entitled How Blocks Stack Up: The Value of Block Play in the Early Years and one workshop entitled Making Math Count: Meaningful and Developmentally Appropriate Mathematics for the Preschool Child. In addition to scholarships for the workshops and technical assistance visits, the grant also included blocks sets and accessories for participating child care providers. In the first round of this grant, 34 people representing 22 programs participated.

- Through a generous grant from IBM, the Council offered a 2 part training entitled, The Westchester Blueprint to a Healthy Start, regarding the importance of healthy nutrition and exercise in early childhood. Further, 14 child care professionals from both family child care and center based programs attended the workshop for free and received a technical assistance visit and \$140 worth of equipment/materials to promote healthy lifestyles in children.



- Through generous funding from the Sexauer Foundation and the Glick Shoolman Foundation, the Council provided intensive technical assistance and training to promote high quality early literacy practices. Five centers and 8 family child care providers participated in the Sexauer project and 10 centers participated in the Glick project in 2011. All of the participating programs received quality improvement grants to develop lending libraries in their programs in order to engage parents in the project and build a bridge between home and classroom.



**‘The Sexauer Foundation is proud to support the Child Care Council of Westchester’s work to build young children’s literacy skills. We continue to be impressed with the important work the Council is doing.’**

***Eileen Hoffman  
President, The Sexauer Foundation***



## The Child Care Council of Westchester Builds a Better Future for Westchester . . . by embracing technology and innovation.

Today, parents and providers are finding referrals, resources, and training opportunities increasingly through technology. With that in mind, we are developing online resources to improve preschool classrooms, train child care providers, disseminate information, and strengthen child care advocacy. Based on the successful models of Quality Forward and the School Age Quality Initiative, we have implemented Intensive Technical Assistance for Preschool Classrooms, a new initiative in which a Council specialist provides consultation based on the Early Childhood Environment Rating Scale. The Council increased the number of interactive modules in its eCDA program, an online professional development opportunity implemented in collaboration with Teaching Strategies, a nationally recognized organization. In addition, we enhanced and expanded our website and we are effectively using Facebook, Twitter, and Constant Contact to convey information about our advocacy efforts.

### 2011 Highlights

- The Child Care Council in collaboration with IBM and United Way successfully distributed over 30 Young Explorer Computers to nonprofit organizations in Westchester County serving children 3-7 years old. Training was also provided to 25 staff members on the Kidsmart Software.

- In 2011, the eCDA, our online CDA program, had an enrollment of 9 students. Since its inception, 89 students have participated in the course.

- We successfully delivered training via the 'Go To Training' platform with the trainer and trainees in different locations.

- 162 providers received assistance and/or training in entering time and attendance through the new computer based payment system for subsidized children.

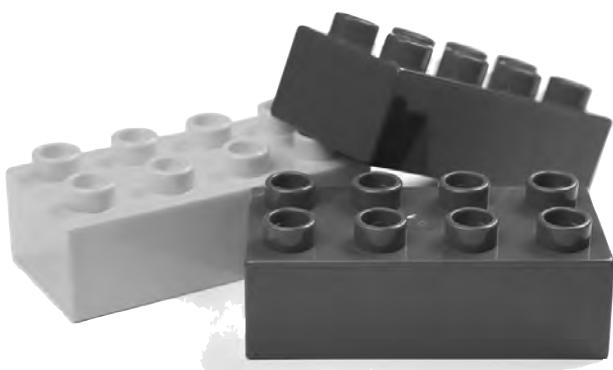
- We increased the scope and frequency of our communications to parents, child care professionals, the media, and all our community partners with a fully implemented Constant Contact messaging plan.

- The Council now has a Facebook page for stakeholders to Like and comment. We tweeted important early care and learning information on our Twitter page.

- The Council continued to expand its web site, [www.ChildCareWestchester.org](http://www.ChildCareWestchester.org), with enriched content and more effective communication regarding services, resources and information important to the Westchester community.



*Young Explorers*



**'I would like to express my gratitude for the accreditation support the Child Care Council provided to our program. Your support made a tremendous impact on our programs. We would not have been able to make it through self-study to candidacy without your help.'**

*NAEYC accreditation participant*



# The Child Care Council of Westchester Builds a Better Future for Westchester . . . by providing effective public education that builds support and increases resources.

Real and threatened cuts to child care at every level of government continued to affect families in Westchester County, compromising families' ability to meet their needs and take care of their families. Despite this dire situation, many concerned organizations, individuals, and businesses have partnered with the Council to positively influence policies, and to ensure that there is access to quality child care.

## 2011 Highlights

■ Born Learning, a public awareness campaign that encourages parents, grandparents and caregivers of young children to turn everyday activities into fun learning opportunities, is a partnership between the United Way of Westchester and Putnam and the Council. Council staff promoted Born Learning at New Rochelle 'Family Day' events (Summer Reading Kick off and Global Gala) in conjunction with the New Rochelle BID and New Rochelle Library. A Tip of the Month was distributed monthly in English and Spanish. The Council continued to train community agency and child care staff.



*Born Learning promotion*

■ Founded by the Child Care Council and the Mental Health Association of Westchester County, the Westchester Task Force on Child Abuse and Neglect held its 34th Annual Unsung Heroes Luncheon, honoring outstanding individuals whose contributions significantly impact the lives of vulnerable children. The event was co-chaired by Dr. Barbara Bernstein, Director of Training at the Mental Health Association of Westchester and Kathy Halas, Executive Director of the Child Care Council.

■ The Council's 2011 Awards Luncheon recognized exceptional professionals from the field as well as friends of the Westchester early care and education community. Champion of Children Awards were presented to Cora Greenberg, Westchester Children's Association; JPMorgan Chase; and Ossining Children's Center Advocacy Committee (Elizabeth Block, Natalie Gorlin, Rev. Stephen Holton, Mary Hurowitz, Jill Lerner, Mark and Iris Levine, Joanne Livesey, Mirla Morrison, Jerome Morrissy, Madelyn Ricciardi, Robert and Lisa Rosenbloom, and Marilyn Wishnie). Joey Award Honorees included: Sarah Brown, Greyston Child Care Center; Janett Grose, Carver Center; Jayne Lapadula, Lakeland Children's Center; Elisabeth Patierno, Little Foxes Daycare; Michelle Soto, Early Einstein Learning Center; and Rosalie Woo, Kids are People.



*'Champions of Children and Joey Award' winners*

■ Miriam Kerness, Infant Toddler Regional Coordinator, delivered a presentation on working with infants and toddlers who have special needs at the annual NYSAEYC conference.



JP Morgan Chase sponsored a complimentary breakfast and program on the importance of quality early care and education for business growth and prosperity on March 25 at Westchester Community College's Gateway Center. The program, entitled, Supporting Westchester's Workforce of Today and Tomorrow: Early Childhood Education, featured Joseph Hankin, President, Westchester Community College; Kim Jasmin, Northeast Region Executive, JPMorgan Chase Foundation; and Dr. Farhad Ameen, Professor of Economics, WCC. Over 100 Westchester County business and community leaders attended.

# The Child Care Council of Westchester Builds a Better Future for Westchester . . . by generating a healthy supply of quality early care and education programs and providers.

The Council offered start-up information to new programs and worked with established programs through a number of initiatives. The Council continued to focus on quality improvement, helping providers to meet the challenge of QUALITYstarsNY, a voluntary system to evaluate and improve program quality in early care and education programs.

## 2011 Highlights

- Westchester County gained 654 regulated child care slots for a total of 31,937.

### WESTCHESTER COUNTY REGULATED CHILD CARE SUPPLY AS OF 12/31/11

	# Providers/Programs	# Licensed Slots
Child Care Centers	199	16,713
School Age Programs	124	10,030
Family Child Care Providers	179	1,356
Group Family Child Care Providers	259	3,838
<b>Totals</b>	<b>761</b>	<b>31,937</b>

- The Registration Department completed 30 family day care initial applications, 12 school age initial applications, 50 family day care renewals, and 55 school age renewals.



Jason Thomas, a Council Legally Exempt Enroller, assists a provider.

- 1255 Legally Exempt providers were enrolled by the Council's Legally Exempt Department, which also performed 86 inspections.
- An average of 130 family providers each month received nutritional guidance and reimbursement for meals and snacks through the Council administered Child and Adult Care Food Program.
- Funded by the Westchester County Office for Women, 15 grants were awarded to child care centers and family child care programs that participated in a quality improvement project. These programs worked over a period of eight months with a quality improvement specialist utilizing the Environment Rating Scale, a nationally recognized, scientifically based tool used to assess and improve quality.

Staff worked with the specialist to develop a plan of action to improve the environment, interactions and curriculum. The grants enabled the programs to purchase educational materials for the children and resources for the staff.

- The Council awarded Future Leader Award scholarships to 9 families on behalf of 9 children attending regulated child care programs.

### The Road to Higher Quality

- The Council was the lead agency for the QualitystarsNY Field Test and continued to work to market the quality rating improvement system to child care programs in the County.
- The Council continued to pursue the Quality Assurance Credential from NACCRRRA, the national hub for child care resource and referral agencies. Coordinated by Susan Edelstein, ISACC Director, the Council's QA initiative is part of a statewide effort to bring consistently high quality child care resource and referral services to families across the state.
- In 2011, two Council Infant Toddler Specialists administered the Infant Toddler Environment Rating Scale, revised edition (ITERS-R) in 24 licensed child care centers. In addition, the Specialists administered the Family Child Care Environment Rating Scale, revised edition (FCCERS-R) in 6 family/group family child care settings. Post Technical Assistance results demonstrated significant improvements were achieved by the participants.

## Child Care Council Members – 2011

### Family Day Care Members

Seyedeh Amini, Roya's Day Care  
 Gladys Arvelo, Mi Casa Child Day Care  
 Mabel Brown, Stepping Stones For Children  
 Kemmah Campbell, In Kemmah's Care  
 Anne De Fino  
 Celeste Dekonski, MTL-My Tiny Loves Child Care  
 Phyllis Fletcher, Phyllis' Child Care  
 Mary Ellen Lisowski, Play and Learn Family Day Care  
 Angelo Martino, TLC Daycare of Yonkers  
 Beverly McLennon, Palrie Day Care  
 Carla Morgan, ABC Nursery & Learning Center  
 Bibi Nepal, Blooming Roses Day Care  
 Carmen Ortiz  
 Maria Rich, Ria's Day Care  
 Geraldine Signer, The Boutchkies  
 Michelle Soto, Early Einstein Learning Center  
 Vivian Torres

### Group Family Day Care Members

Sawudat Abraham-Rogers, Baby Cubs Daycare Inc.  
 Ester Aguzzi, Country Kids Day Care  
 Maxine Allan, Martina's Tender Care Daycare  
 Jenny Arvelo, Jenny's Loving Day Care, Inc.  
 Rosemary Arvonio, Nonna's House, Inc.  
 Lucia Bastone, Lucia's Day Care  
 Judy Becker, Little Ones Family Day Care  
 Dana M. Belin, Busy Bees Family Daycare  
 Helen B. Bland, Helen's Sweet Pea Daycare LLC  
 Dinita M. Blount, Kit Kat Child Care Clubhouse  
 Deborah Brackett, Deb's Day Care  
 Longreece Brown, Magical Play School  
 Raquel F. Burton, Busy B Family Child Care  
 Lori Carroscio, The Little Kingdom Day Care  
 Sonia Daley, Elite Family Day Care LLC  
 Ri-Hwa Endo, Julie's Little School  
 Caterina Fidelio  
 Katina Fields, Creative Play Child Care  
 Liza Findlay, The Children of Somers Day Care

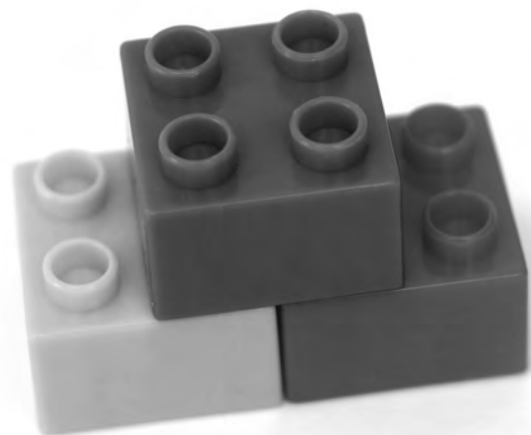
Gloria Foster, Personal Touch Family Child Care  
 Fawn Franzese, Crayons, Cookies & Kisses  
 Leonard Gruyon, Fun-N-Learn, Inc.  
 Cynthia Hinson, Teaching Little Ones Christ  
 Geraldine Hogan-Kaplan, Dynamic Beginnings  
 Jan Jimenez, Jan's Kidz N' Motion  
 Mahvash Khanjar, Banv's Group Family Child Care  
 Sheryl D. King, Kresge's Little Play House  
 Jessi Lanza, Learning Buddies  
 Shari D. Lewis, Nana's Place Family Childcare  
 Lana Makhlof, Little Me Daycare Center, Inc.  
 Lea Martelly-Boromisza, Smith Loving Care, Inc.  
 Susan Matos, Imagination Family Day Care  
 Abbie Maurer, Abbie's Place  
 Gloria McDonald, The Worthington Nursery School  
 Kristina Meola, Kristina's Little Angels, Inc.  
 Monika Mercedes, Bright Little Minds  
 Sonia Miranda, Tiny Tots Group Day Care  
 Gladys Molina, Fawn Court Child Care  
 Santos E. Morales, Little Sweethearts Group Daycare  
 Jackie Mullan, Precious Minds Children's Center  
 Wendy Nashid Jackson, Rise N Shine Child Care Inc.  
 Dorothy G. Noel, Link by Link Children's Center, Inc.  
 Elisabeth G. Patierno, Little Foxes Day Care  
 Maulene Pitterson, I Can Learning Center  
 Annerys Rodriguez, Kid & Play Day Care  
 Gabriela Rodriguez, All 4 Kids Day Care  
 Anna Maria Rodriques, Little Feet First, Inc.  
 Mary T. Roffi, Family Child Day Care, Inc.  
 Renielyz Romero, Romero Group Family Daycare  
 Wilma Rosario, Children's Circle  
 Diana Rothenberg, The Children's Playhouse of Yonkers,  
 Huladana Royal, Quality Care  
 Maria Scarpati, Ines Child Care

Susan Shillingford, Emily's Care  
 Gertrude Smith, Little Bundles of Joy D.C.  
 Sharon Smith, Little Steps Day Care, Inc.  
 Tonia Sprinkle, Sprinkle Stars, Inc.  
 Safiya Swan, Little Swans Family Day Care Inc.  
 Soraya Trujillo, Our House Child Care  
 Esperanza Velasquez, Hope Child Group  
 Aleida Vitolo, Kid's World Daycare  
 Murlene Wignal, Wiggles and Giggles Day Care  
 Rosalie Woo, Kids Are People, Inc.  
 Indranee Yogarajah, The Kids Play Center

### Individual Members

Marie Claire Alphonse, New Rochelle YMCA  
 Cheryl Anstett, Ann and Andy Child Care II  
 Juliane Arlt, Eliza C Frost Children's Center  
 Gigi Aronoff, Creative Playtime  
 Janice L. Barnes, Ridgeway Nursery School  
 Jacalyn Binstock, Greenburgh Hebrew Center Nursery  
 Deborah Bobian  
 Jason Bock, Kidd Kare at St. Ann's School  
 Nancy Brophy, Tom Thumb Pre-School Center, Inc.  
 Vera L. Correa, Bright Beginnings Preschool  
 Julie Dorfman, J.C.C- Mid Westchester  
 Holly Edelstein, Westcop  
 Beth Farkes  
 Sakura Gakuen  
 Robin Goldberg, Congregation K.T.I. Early Childhood  
 Patty Goldstick, Temple Israel Center Nursery School

Maxine Handel, Lincoln Park Community Day Care  
 Anne Harris, Lissie's Katonah Playschool  
 Betty Hengst, Our Montessori School Stepping  
 Ea Jensen, The Nursery School Ethical Culture  
 Roxanne Kaplan, World Cup Nursery School and Gale Kelleher, Rainbow Nursery School  
 Michael La Magna, Timins and LaMagna, LLP  
 Alice Lee  
 Andrea Leite, Tots Place  
 Audrey Love, Mt. Vernon Daycare Center  
 Maria Luccese, Community YMCA of Northern  
 Derry Martabano, The Kiwi School  
 Stephanie Mazzuca  
 Scott Mesh, Los Ninos Services  
 Joan S. Monk, Peter Pan Children's Fund  
 Margaret M. Murtagh, The Reformed Church Nursery School  
 Linda Jo Platt, Community Nursery School  
 Linda Rinaldi  
 Jean Romeo, Eliza C. Frost Child Center  
 Barbara Schori, The Ridge Street Country School, Inc.  
 Paulette Sink, The Seed Day Care Center  
 Barbara Swanson, Croton Community Nursery School  
 Elsie Swint  
 Susan Tolchin, Westchester Reform Temple  
 Renee Torchiano, The Little Disciples Learning Center  
 Adele Walker, Nana's Place Child Care, Inc.





## Child Care Council Members – 2011

### Center Members

Karen McKittrick, Accent On Learning Child Care Center  
 Laurie A. Kaufman, All Aboard On The Hudson  
 Jennifer Stern, All Aboard, Inc.  
 Barbara Cozza, Bedford Discovery Infant Center, Inc.  
 Phyllis DiFrancia, Bedford Discovery School  
 Mindy Citera, Bet Torah Nursery School  
 Roslyn Conroy, Bright Horizons at Bellefair  
 Katherine Grayson, Bright Horizons Childrens Center Inc  
 Margaret Rowan, Bright Horizons Family Solutions  
 Jean Nelson, Bronxville Montessori School  
 Sherry L. Horowitz, Childrenspace  
 Andria Brown, Collin Allen Child Development  
 Marion Anderson, Cornerstone Children's Center  
 Jennifer Dawber, Days Of Wonder Child Care Center  
 Kara Lee Conroy, Easter Seals New York, Inc  
 Kevin Roberts, Elizabeth Mascia Child Care Center  
 Grace Marie D'Erizans, Family Services of Westchester on  
 Sarah L. Brown, Greyston Family Inn Child Care  
 Cindy Veazey, Happy Harbor Child Care Center  
 Lisa Nardozzi, Happy Tots Day Care Center  
 Debbie Imperia, Harrison Children's Center Inc II  
 Angela LaSorsa, Harrison Children's Center@Harrison

Jodi Ann Robinson, Harrison Day Center, Inc. @ Underhill  
 Susan Grant, Hitchcock Church Weekday School  
 Jeanne-Marie Gagnon, Holy Name of Mary Montessori School  
 Diane Chevian, Hudson Country Montessori School  
 Victor Presto, Immaculate Conception Preschool  
 Maria Leitenberger, John A. Coleman School  
 Deborah Fine, Kids Base & The Little School  
 Lori Ford, Kidz Country Learning Day Care  
 Felice Harris, Lanza Learning Center  
 Joyce Guimaraes, Larchmont Avenue Church Preschool  
 Diane DiBuono, Le Count Place Child Care, Inc.  
 Pushpa Jagoda, Liberty Montessori School  
 Donna Hall, Lincoln Academy  
 Carolyn Decker, Little Angels Child Care Center  
 Leila Marie Badran, Little Flower Nursery School  
 Adam Holstein, Little Friends Middle Village, Inc.  
 Sharon Woods, Marion & George Ames Early  
 Jody Glassman, Mazel Tots  
 Suzanne Boydston, Memorial Methodist Early Childhood  
 Eileen Scerra, Montrose Child Care Center  
 Dorothy Jordan, Mount Kisco Child Care Center  
 Ronnie Weinberger, MS, Oak Lane Child Care Center

Howard Milbert, Ossining Children's Center  
 Cookie Rachael Colucci, Peas & Karrots  
 Lori Woliner, Pelham Children's Center, Inc.  
 Carol Cleary, Play Care  
 Judy M. Betz, Purchase Children's Center, Inc.  
 Barbara Berrios, Queen's Daughters Day Care Center  
 Maria Gaudelli, Saint Gregory the Great  
 Suzanne Newcomb, Saint Paul's Child Care Center  
 Marion Henson, Shiloh Child Care  
 Gloria T. Meola, Sister's of St. John The Baptist Day  
 Laura Strong, St. Peter's Child Care Center  
 Maritza Mera, Strawberry Early Childhood  
 Patricia Amanna, The Children's Center at Purchase  
 Polly Peace, Country Childrens Center, Inc.  
 Carol Miillio, The Early Learning Center at Field  
 Juana Marie Langone, The Montessori Garden  
 Sabrina Delgado, The New Rochelle Day Nursery  
 Patricia Palfy, The Rivertown Pre-school  
 Diane Matrafailo, The Robin's Nest @ Phelps Memorial  
 Michael Vecchiolla, United Preschool Center/CPW  
 Barbara A. Bracey, Vernon Heights Day Care Center, Inc.  
 Susan Zucker, Virginia Marx Child Care Center @ WCC  
 Anita Vaswani Martell, White Plains Family YMCA  
 Yvonne Flores, Woodlot Christian Pre-School, LLC  
 Henry Wilson, YMCA - Mt. Vernon  
 Kim Dias, YMCA of Central & Northern Westchester  
 Dina Ronk, Young Wonders  
 Carol Robinson, YWCA Child Care Center  
 Zenitha Ireland, YWCA Child Development Center, Inc.

### Nursery Members

Mindy Citera, Bet Torah Nursery School  
 Melissa Csanko, Bryn Mawr Childrens Center  
 Carol Conolly, Discovering Me Day Care Center  
 Marcia Heese, Greenville Church Nursery School  
 Irene Balint – Wemer, Hastings Nursery School  
 Barbara Klein, Huguenot Nursery School  
 Nancy Isaacs, Jewish Community Center of Harrison  
 Karen Coombs, Little Sparrows Nursery School  
 Lynda Merchant, Mamaroneck Community Nursery  
 Abigail Dowd, Scarsdale Friends Nursery School  
 Cheryl Martin, Sunset Nursery School  
 Heather Brown, The Pre-Day School at All Souls Parish  
 Sheridan Povemba, The Pre-Day School at All Souls Parish  
 Niki Guida, Weekday Nursery School  
 Connie Stringer, Yorktown Presbyterian Pre-School

### School Age Members

JNeil Stepman, Aspire, Inc.  
 Madeline Ramos, Caring Hands Of Yonkers  
 Joann Saporta, Chappaqua Children's Workshop, Inc.  
 James Barrett, Childrenspace, Inc  
 Marianne Minard, Enrichment Center of Yorktown, Inc.  
 Tamika Douglas, Funshine, Inc.  
 Patricia O'Connell, Harrison Childrens Ctr/Parsons  
 Lynn Lutomski, Irvington Children's Center  
 Ann Marie Terrone, KEEPS, Inc.  
 Lauren Collins, Kids S.P.A.C.E. at Osborn Elementary  
 Jayne Lapadula, Lakeland Children's Center  
 Henry Helm, Nepperhan Community Center  
 Marie Claire Alphonse, New Rochelle YMCA  
 Nina Goldman, Preston After School Program  
 Laura Mattioli, The Mother Connection

If any name has been inadvertently left off any list, please let us know and accept our apology. We appreciate your support.





*We are deeply grateful to our government partners and the many individuals, businesses and organizations who generously supported the Council from 7/1/10 to 12/31/11:*

Foundations, Organizations and Companies

Benerofe Foundation  
 Citizens Communications Corp.  
 Community Foundation of New Jersey  
 Cornell Career Services  
 Early Care & Learning Council, Inc.  
 Edith Glick Shoolman Foundation  
 Endurance Services Limited  
 IBM  
 Imperial Sterling, Inc.  
 JPMorgan Chase  
 Karen Spencer Design, Inc.  
 Kleinman, Saltman & Bolnick, PC  
 M & T Bank  
 Maier, Markey & Justic, LLP  
 Marino & Associates, PC  
 Mount St. John Convent  
 Normandy Fund Sub Management  
 North Street Community, LLC  
 Oxnam, Tulis, Kirkpatrick, Whyatt  
 Palumbo Construction Corp  
 Research Foundation of SUNY  
 The Sexauer Foundation  
 Philip & Lynn Straus Foundation  
 United Way of Westchester & Putnam  
 United Way of Westchester & Putnam Employees  
 Verizon Employees  
 Westchester Community Foundation  
 Westchester Surgical Specialists  
 William B. Meyer, Inc.  
 Work/ Family Directions, Inc  
 Zno Community Service Fund

Individuals

David Abrams  
 Christy Aedo  
 Elizabeth Agosto  
 Kerry Albolino  
 Kirsten Aldrich  
 James Allison  
 Patricia Amanna  
 Christina Amoruso  
 Karen Coape-Arnold  
 Richard Baccari  
 Bobbi Baker  
 Maureen Barbelet  
 Michael Barresi  
 Ellen Mayer Baudinet  
 Rosalina Bermudez  
 Karen Blumenthal  
 Kevin Breuer  
 Janet Burkert  
 Martha Burns  
 Paul Campisi  
 W. Campos  
 Jesus Cardona  
 Jason Chapin  
 Jen Chapin  
 Jonathan Chapin  
 Sandra Chapin  
 Dr. Gregory Chartier  
 Anna Chen  
 Thomas Coletti  
 Lena Crandall  
 Brian Curran  
 David Daly  
 Michael K. Davis  
 Elmar Deguzman  
 Jeffery S. Demond  
 Joseph Devito

Margot Elkin  
 Lisa Ellis  
 Dr. Mistie Eltrich  
 Ellen Erhardt  
 Salli Figler  
 Kim Fountain  
 Maura Gallagher  
 Christopher Garcia  
 Dawn Garrison  
 Gerald Geist  
 Thomas Gerardi  
 Darlene Gibson  
 Elizabeth Gordon  
 Conrad and Lottie Harris  
 Laura Haytman  
 Daniel Hochvert  
 Jeffrey Honcek  
 Marguerite Ianello  
 Martha Jackson  
 Nancy Kaminsky  
 Rhonda Kershner  
 Barry Kleiman  
 Ewa Knapik  
 Jennifer Kooney  
 Kathleen Kooney  
 Kenneth Kristal  
 Michael Kutzin  
 Paul Leand  
 Robert Lehrburger  
 Monte & Angelina Lipman  
 Kelly Loparrino  
 Jennifer Lynskey  
 Noelle Macaluso  
 Paul Maddon  
 Sarah Mannello  
 Debra Etelson-Mayblum  
 Jennifer Mayo  
 Cecilia McKenney  
 Simona Sauca-Migneco  
 Beverly Miller  
 Timothy Breeze Miller  
 Andrew Mola  
 Michael Molinelli  
 Barry Morris  
 Camille Murphy  
 Elizabeth Naman  
 A. O'Donnell  
 Richard Oliver  
 Stephanie Orgen  
 Ralph E. Penny  
 Theresa Perl  
 Leah Peskin  
 Elizabeth Pforzheimer

Thomas Picone  
 Mildred Pintchman  
 Lisa Pogostin  
 Karen Pugliese  
 David Rapaport  
 Harold Riley  
 Maria Rose  
 Debra Russell  
 Dorothy Sanabria  
 Taisha Santiago  
 Drew Saunders  
 Jonathan Scott  
 Mary Lou T. Sgro  
 Vimal Sharma  
 Pamela Shaw  
 Patricia Shaw  
 Barbara Sherman  
 Catherine Shipley  
 Mark Silverstein  
 Terri E. Simon  
 John Sinner  
 Sean Skelly  
 Monica Sottile  
 Jill Spieler  
 Charlotte Stafford  
 Howard Stahl  
 Brandi Staropoli  
 Susan Steeg  
 Michele Stockwell  
 Christopheher Straub  
 Lynn G. Straus  
 Vivian Taylor  
 Nina Tranquillo  
 Noreen Violante  
 Sharon Kay Winters  
 Ann Yaspan  
 David Yaspan

Government

NYS Office of Children and Family Services  
 NYS Department of Health  
 Westchester County Department of Health  
 Westchester County Office for Women  
 Westchester County Department of Social Services



*'I am so grateful to the Council for helping turn around our program. The kids are so much happier. They know what to expect, can choose areas of interest, and are eager to finish their homework and get to the activities. There's no time to sit there and be bored—that has definitely helped with behavioral issues.'*

*Dwayne Cloud, Director,  
 The After-School Program at the  
 Martin Luther King School, Yonkers  
 SACERS assessment and improvement recipient*

# Child Care Council of Westchester, Inc. Financials

*Fiscal Year Ended June 30, 2011*

**STATEMENT OF FINANCIAL POSITION**

**ASSETS**

Cash and cash equivalents	\$599,763
Investments	491,888
Accounts receivable, net	799,687
Prepaid expenses and other assets	9,479
<b>Total Assets</b>	<b>\$1,900,817</b>

**LIABILITIES AND NET ASSETS**

**LIABILITIES**

Accounts payable and accrued expenses	\$411,016
Deferred revenue	17,615
Deferred rent	243,917
<b>Total Liabilities</b>	<b>672,548</b>

**NET ASSETS**

Unrestricted	855,284
Temporarily restricted	372,985
<b>Total Net Assets</b>	<b>1,228,269</b>
<b>Total Liabilities and Net Assets</b>	<b>\$1,900,817</b>

**STATEMENT OF ACTIVITIES**

**CHANGE IN UNRESTRICTED NET ASSETS  
OPERATING REVENUE**

Program revenue	\$3,791,451
Contributions	54,323
Interest and dividends	951
Other income	14,826
Net assets released from restriction	43,823
<b>Total Operating Revenue</b>	<b>3,905,374</b>

**OPERATING EXPENSES**

Program services	3,714,725
General and administrative	242,560
Fundraising	4,578
<b>Total Operating Expenses</b>	<b>3,961,863</b>
<b>Change in Unrestricted Net Assets</b>	<b>(56,489)</b>

**CHANGE IN TEMPORARILY RESTRICTED NET ASSETS**

Interest income	4,645
Unrealized and realized gain on investments	10,560
Net assets released from restriction	(43,823)
Change in Temporarily Restricted Net Assets	(28,618)
Change in Net Assets	(85,107)

**NET ASSETS**

Beginning of year	\$1,313,376
<b>End of year</b>	<b>\$1,228,269</b>

Audited financial statements with footnotes can be obtained from administrative offices.



**‘The scholarship from the Council gives me peace of mind because now I can afford the quality child care that she deserves.’**

**Sarah Lake  
Single mom whose child attends  
Mt. Kisco Child Care Center**

## Child Care Council of Westchester, Inc. Board of Directors

### PRESIDENT

Jason C. Chapin, Program Manager  
The Workplace, Inc.

### VICE PRESIDENT

John E. Sterbenz, Vice President  
Investments, Wells Fargo Advisors

### TREASURER

Navy Djonovic, Partner  
Maier Markey and Justic, LLP

### SECRETARY

Peter Helmer, Principal  
Sales Lead Dynamics, Inc.

### BOARD MEMBERS

Michelle Lee Beltrano, Principal  
Hedgestone Consulting Group, LLC

Gregory J. Chartier, Ph.D, SPHR, Principal  
The Office of Gregory J. Chartier

Patricia Cruz, Manager, Community Relations  
Shop Rite Supermarkets

Dr. Mistie Eltrich, PNW  
Northern Westchester BOCES

Felice Harris, Executive Director  
Lanza Learning Center

Andrew Karlen, Partner  
Karlen & Stolzar, LLP

Jennifer Kooney, Vice President  
M & T Healthcare & Not-for-Profit Lending

Cecilia McKenney, Executive Vice President  
Frontier Communications

Camille Failla Murphy, LCSW, ACSW, Founder & Director  
Women's Research and Education Fund

Michelle Ortiz-Soto, Owner  
Early Einstein Learning Center

Thomas Picone, President  
Picone Capital, LLC

Craig Ruoff, Managing Director  
Rakow Commercial Realty Group

Jeff Samuelson, Director, Global Technology  
PricewaterhouseCoopers

Byron Smalls, Director, School Programming  
White Plains Youth Bureau

Karen Spencer, President & Creative Director  
Karen Spencer Design, Inc.

Dr. Janet Stockheim  
Westchester Institute for Human Development

Marquette L. Wilson  
Independent Human Resources Consultant

## Child Care Council Staff

### EXECUTIVE STAFF

**Executive Director**  
Kathleen Halas

**Controller**  
Renette Bayne-Issaka

**Office Manager/  
Executive Assistant**  
Cheryl Stephens

**Professional Development  
Director**  
Idie Benjamin

**Employer & Parent Services  
Director**  
Nicole Masucci

**Health Care Consultant  
Services Director**  
Elissa Guzzardi

**Provider Services**  
Dorothy Jenkins

**Institute for School Age  
Child Care Director**  
Susan Edelstein

### FINANCE STAFF

**Bookkeepers**  
Christine Iacovello  
Diane Montagnino

### ADMINISTRATIVE STAFF

**Administrative Assistant**  
Shamika West

**Receptionist**  
Nina Garland

### PROFESSIONAL DEVELOPMENT

**Professional Development  
Coordinator**  
Dana Doyle

**Infant/Toddler Regional  
Coordinator**  
Miriam Kerness

**Infant/Toddler Specialist**  
Laura Cleare

**Professional Development  
Specialist**  
Nicole La Bar

**CACFP Administrator**  
Noreen Delacy

**CACFP Senior Case Manager**  
Evelyn Copeland

**CACFP Bi-Lingual  
Case Manager**  
Janet Romano-Fernandez

### HEALTH SERVICES

**Child and Family Health Plus  
Facilitated Enroller**

Neondra Navarro-Santos

### INSTITUTE FOR SCHOOL AGE CHILD CARE

**Quality Improvement  
Specialist**

Mary Ann Brendler

### RESOURCE & REFERRAL

**Child Care Subsidy  
Coordinator**  
Arlene Leuzzi

**Child Care Counselors**  
Debbie Gonsalves  
Sydney Jenkins

**R&R Database Administrator**  
Ellen O'Brien

### REGISTRATION

**Registration Coordinator**  
Lindsay Tiernan

**Registrars**  
Evelyn Henriques  
LaToya Carney-Ramsey  
Elsa Sanchez

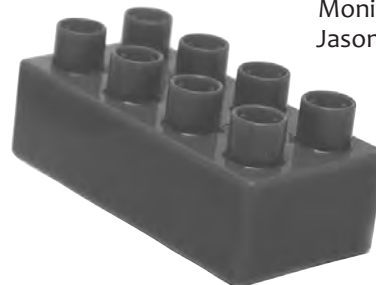
**Bi-Lingual Registrars**  
Jose Leon  
Alexandra Santana

**Bi-Lingual Community &  
Health Care Consultant  
Service Assistant**  
Flor Tello

### LEGALLY EXEMPT

**Legally Exempt Coordinator**  
Juanita Pope

**Legally Exempt Enrollers**  
Monica Soto  
Jason Thomas





313 Central Park Avenue, Scarsdale NY 10583

Telephone: 914-761-3456

Fax: 914-761-1957

Website: [ChildCareWestchester.org](http://ChildCareWestchester.org)

E-mail: [childcare@cccwny.org](mailto:childcare@cccwny.org)